

LARGE FORMAT CUTTING

PREMIUMCUT ELC


bullmer
cutting room technology



THE ORIGINAL
"A CLASS OF IT'S OWN"

PREMIUMCUT ELC

up to 5,2 m



up to 5 m

bullmer

PRODUCTIVE: Acceleration up to 2g and speed up to 120 m/min (2 m/s).

VARIABLE: Multifunctional due to large tooling range.

MODULAR: Anytime quick retooling and retrofitting.

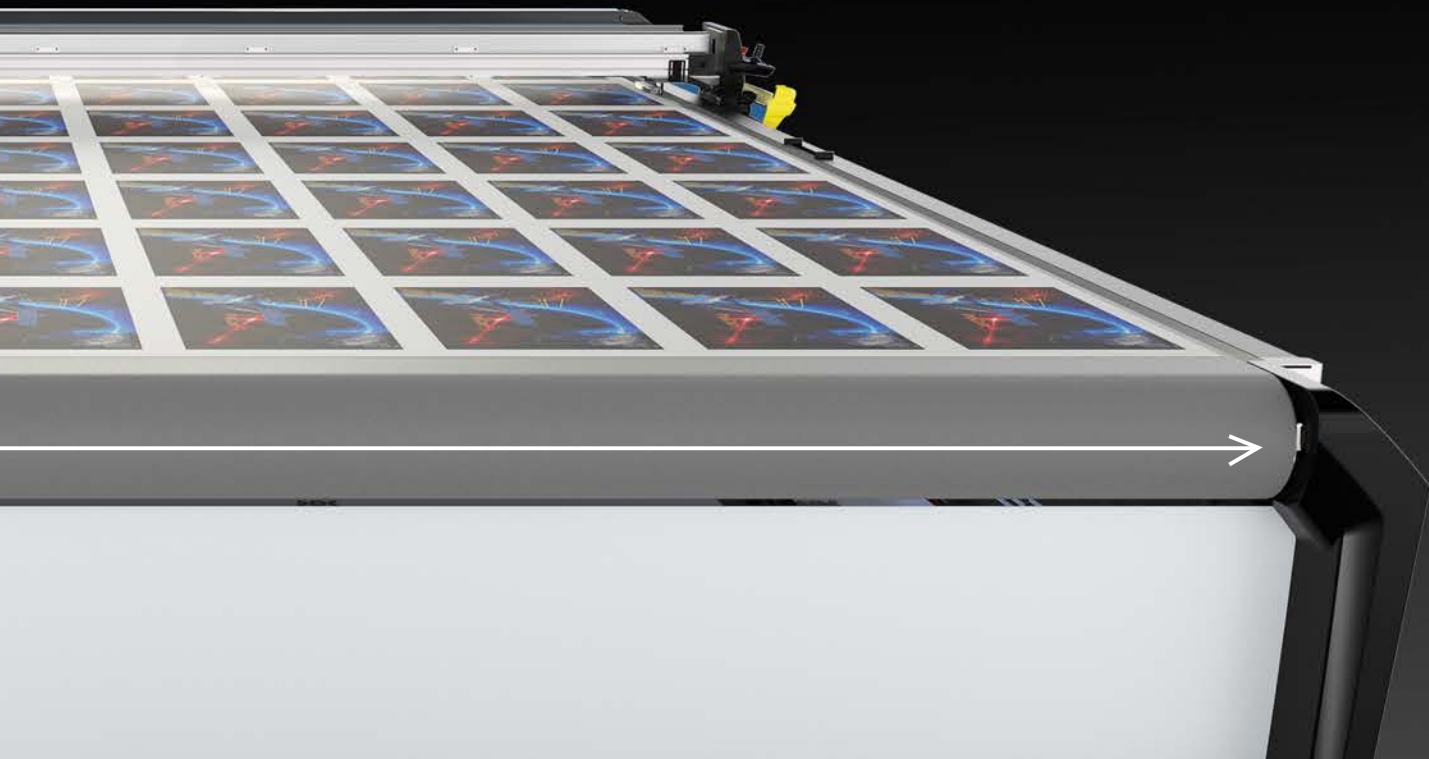
ROBUST CONSTRUCTION: Drive system with 2 separate x-axis drives.

SIMPLE: Tool exchange within seconds.

CUSTOMISED: Machines can be adapted to customer requests.

ECOLOGICAL: High vacuum with low energy consumption.

DIMENSIONS: Standard and custom-made.



THE PREMIUMCUT ELC:

variable options:

Working width:

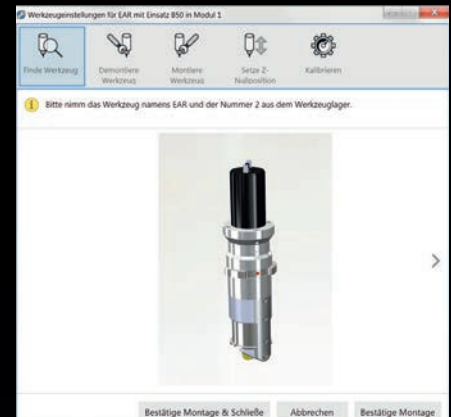
Standard working length	1200/2000/2500/3200/5200mm
Standard working width	1400/1600/1800/2200/2600/2800/3200/5000 mm
Working height	880 mm +/- 40 mm
Max. cutting height	50mm (depending on material)
Max. Acceleration	up to 2g
Positioning speed	120 m/min
Repeat accuracy	0,1mm

Connection values:

Vakuum	open
Compressed air	6 bar
Power	3,5 kW plus performance of the vacuum pump (7,5 kW)

Operating environment:

Humidity	< 80%
Temperature	15-35 °C



easy tool exchange with
bullmer toolmanager

Large tool range:



V-Cut



Creasing tool



Notch tool



Grinding tool



Drag knife



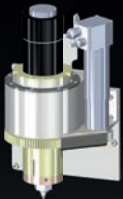
Kiss Cut



Inkjet



Electric oscillating knife



Ultrasonic tool



Milling tool



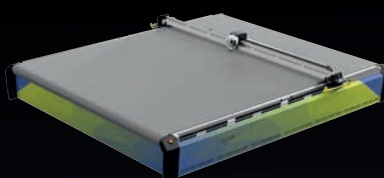
Drilling tool



Electric powered rotary blade



Pneumatic oscillating knife



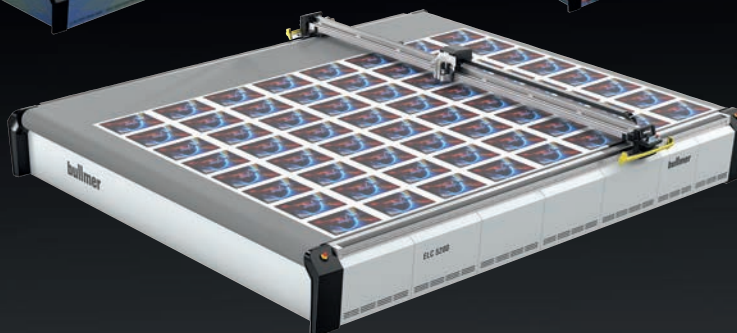
WHAT WE OFFER

100% operational reliability.

ORIGINAL parts and accessories.

Specially adapted to your machine.

Quickly on site at all times.





**bullmer
tool system
knife calibration**



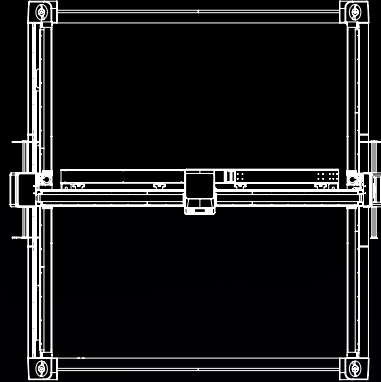
Made in Germany



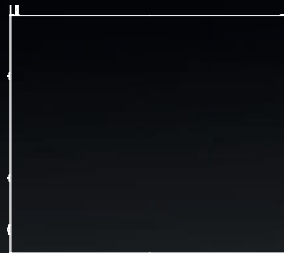
Supply



bring in zone
viewing
digitising
nesting



cutting zone



pick up zone



up rolling zone / area

bullmer GmbH

Heutal 7 | D-72537 Mehrstetten | Telefon: +49 (0)7381 / 183 – 0 | E-Mail: info@bullmer.de | Internet: www.bullmer.de