

LARGE FORMAT CUTTING  
**PREMIUMCUT ELC**

**bullmer**  
cutting room technology



**THE ORIGINAL  
"A CLASS OF IT'S OWN"**

# PREMIUMCUT ELC

up to 5,2 m

up to 5 m

**bullmer**

**PRODUCTIVE:** Acceleration up to 2g and speed up to 120 m/min (2 m/s).

**VARIABLE:** Multifunctional due to large tooling range.

**MODULAR:** Anytime quick retooling and retrofitting.

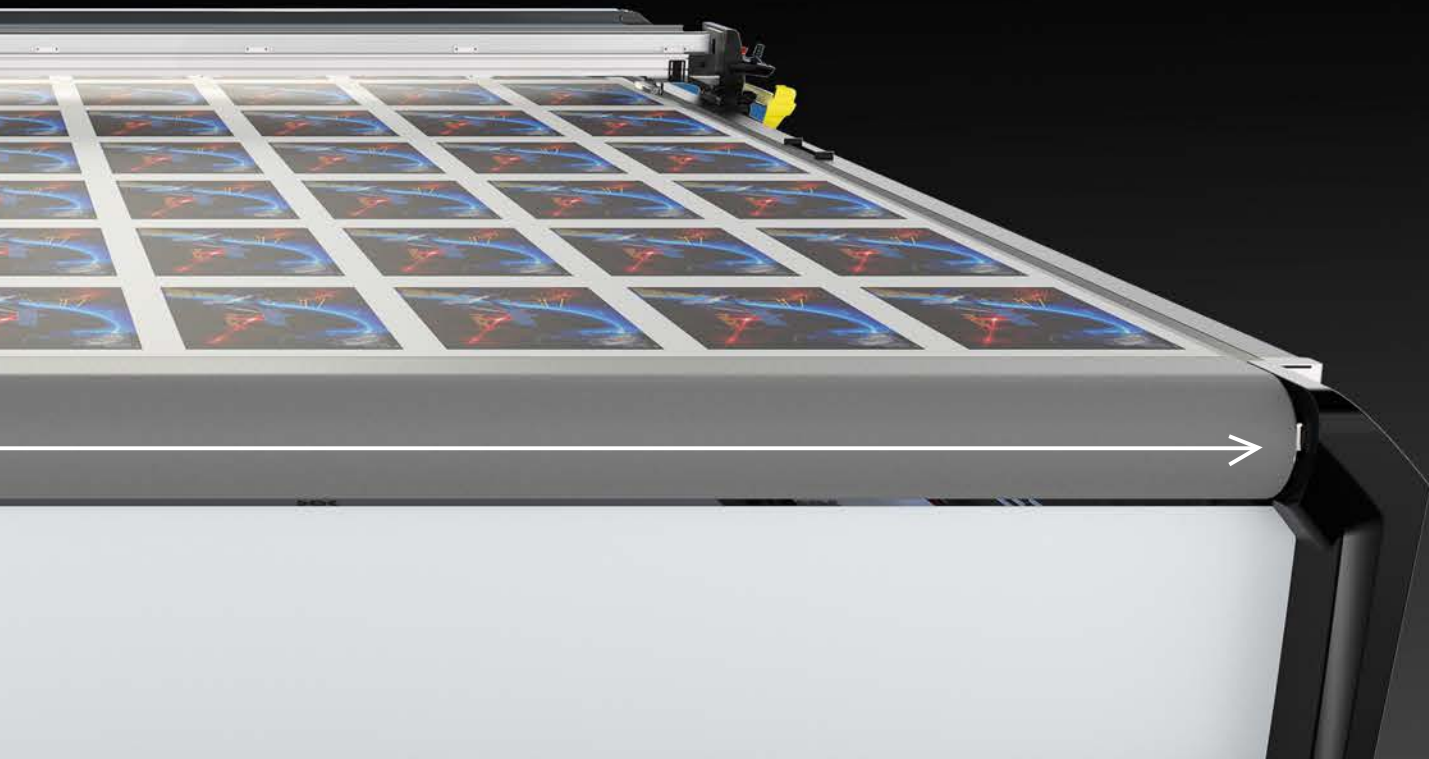
**ROBUST CONSTRUCTION:** Drive system with 2 separate x-axis drives.

**SIMPLE:** Tool exchange within seconds.

**CUSTOMISED:** Machines can be adapted to customer requests.

**ECOLOGICAL:** High vacuum with low energy consumption.

**DIMENSIONS:** Standard and custom-made.





# Large tool range:



V-Cut



Creasing tool



Notch tool



Grinding tool



Drag knife



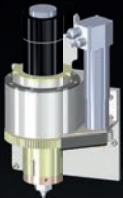
Kiss Cut



Inkjet



Electric oscillating knife



Ultrasonic tool



Milling tool



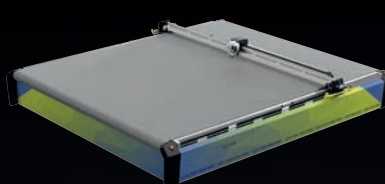
Drilling tool



Electric powered rotary blade



Pneumatic oscillating knife



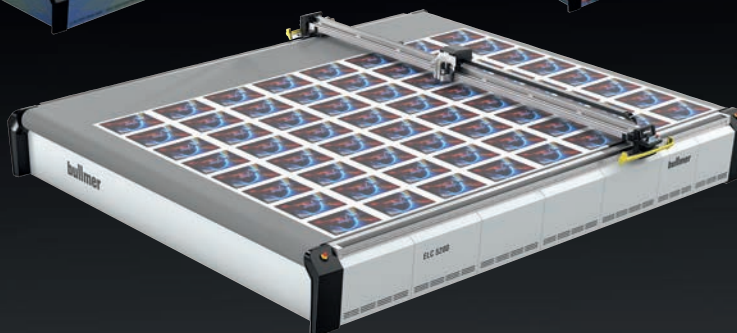
## WHAT WE OFFER

100% operational reliability.

ORIGINAL parts and accessories.

Specially adapted to your machine.

Quickly on site at all times.





**bullmer  
tool system  
knife calibration**



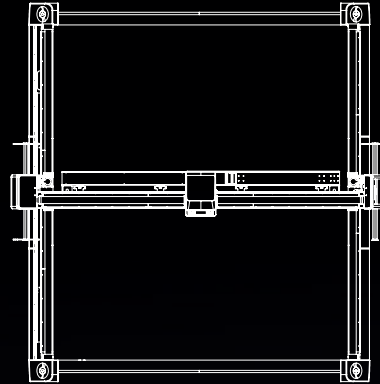
Made in Germany



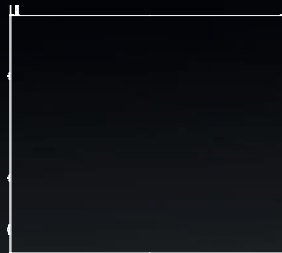
Supply



bring in zone  
viewing  
digitising  
nesting



cutting zone



pick up zone



up rolling zone / area

**bullmer GmbH**

Heutal 7 | D-72537 Mehrstetten | Telefon: +49 (0)7381 / 183 – 0 | E-Mail: [info@bullmer.de](mailto:info@bullmer.de) | Internet: [www.bullmer.de](http://www.bullmer.de)