



APPAREL



SIGN&GRAFIC



PACKAGING



COMPOSITE



FURNITURE



AUTOMOTIVE

Visual positioning system

Automatic precise positioning for various materials, automatic cutting, high-definition camera adjust the height automatically, avoids the inaccurate positioning caused by the thickness of the material.

Top vision system

Bullmer top vision system adopts a high-performance industrial camera, which can complete real-time photos with one click, extract the cutting outline, and realize precise cutting of various printing materials.

Ethernet bus technology

Ethernet bus technology
Using Ethernet bus technology, the communication cycle is 0.5ms to create high precision, high efficient motion control system.

Precrush safety system

The device adopts light sensor and mechanical anti-collision design to prevent injury caused by equipment during operation.

PRODUCT INFO

TECHNICAL DATA

Model	X5	Drive Mode	Rack and Pinion + linear guide
Size	3567×2446/3567×2646	Motion Controller	EtherCat + Servo Motor
Working Area	2500×1600mm/2500×1800mm	Material Transport	Conveyor table
Max Speed	108 m / min	Format	PLT, DXF, NC, CUT
Max Acceleration	1.5g	File Transport	Ethernet Cable
Repeat accuracy	± 0.05mm	Material Fixation mode	Vacuum Suction
Max.cutting Thickness	50mm	Power Standard	380V/220V AC 50Hz/60Hz

The final interpretation right of all the above technical data belongs to bullmer company

Bullmer (China) Co., Ltd
No.181 Qiyihe Road Linhai Zhejiang Province China
TEL : +86 (0) 576-88177718
FAX : +86 (0) 576-88177758
www.bullmer.com.cn

Bullmer (Germany) Co., Ltd
Heutal 7 Industriegebiet Mehrstetten Germany
TEL : +49 (0) 7381 183-0
FAX : +49 (0) 7381 723
www.bullmer.de

bullmer
cutting room technology

SINCE 1933
Germany

X5

Single layer cutting system



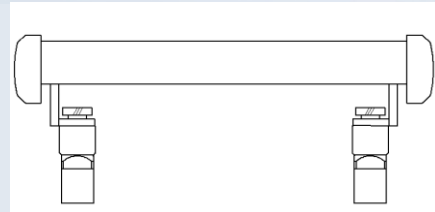
X5 Single layer cutting system
Integrated cutting solution for Fashion, Textiles, Upholstery, Composites and Graphics.

PRODUCT FEATURES

HIGH PRECISION

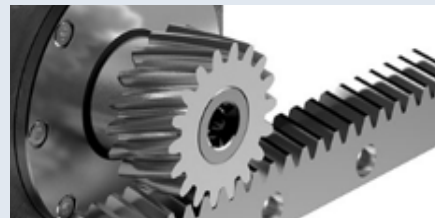
1. Robust machine construction

Robust construction with high-precision and high-strength aviation-grade aluminum profiles, advanced reinforced design. Delivering high-precision cutting accuracy at high speed



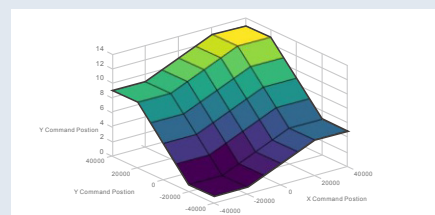
2. X-axis dual motor structure

Advanced independent synchronized driving system with two separate 750W X-axis drive motors, to ensure more consistent and precise cutting results during high-speed operation.



3. Precision Helical gear transmission structure

Using helical gear, with high transmission stability, high repeatability, strong and wear-resistant, to ensure high precision cutting.



4. Intelligent table height compensation system

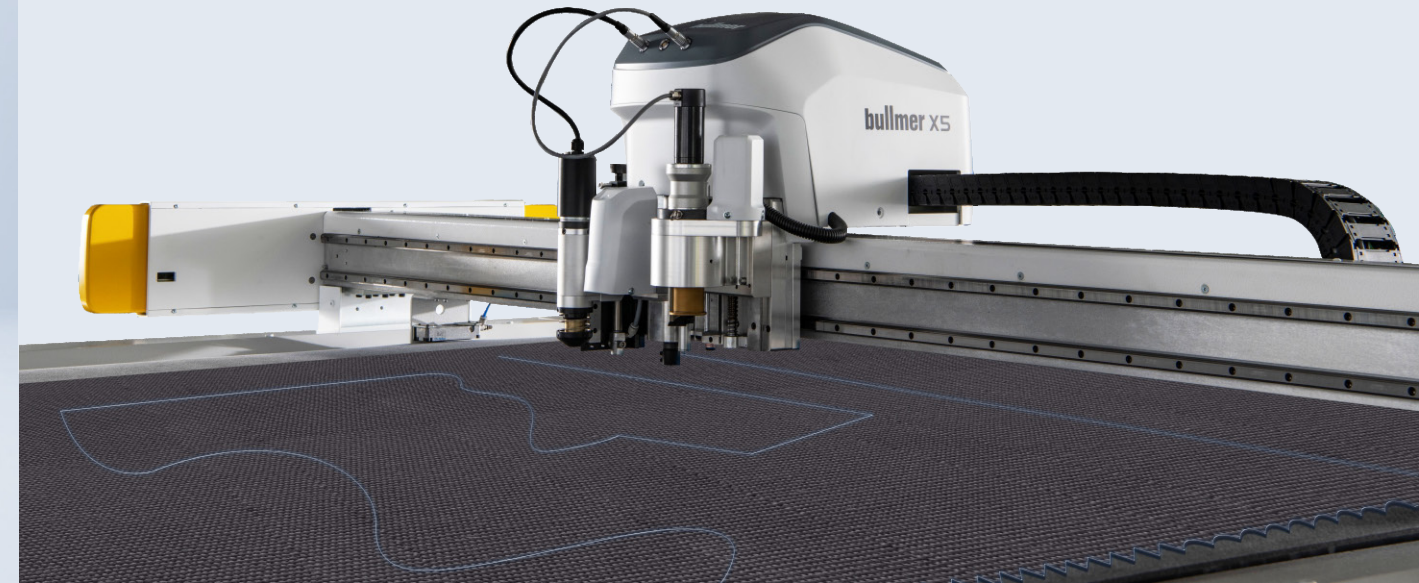
The level of the table top is mapped by a high precision gauge system, and the cutting depth is automatically compensated during cutting, so that we can deliver extended life of the conveyor belt and ensure greater the cutting accuracy.

PRODUCT FEATURES

HIGH SPEED

1. bullmer technology, stable and efficient

German single-layer cutting technology, focusing on solving production Challenges for over 40 years. With maximum cutting speed of 100 m per minute, and the maximum acceleration of 1.5 G



2. bullmer tooling, change in seconds

Following the design of the German modular Tool Holder, the tool change can be completed in seconds

